

Adler-Apotheke

KARLHEINZ MAISCH

HILDEN

FERNSPRECHER 170

Bankkonto: Sparkasse Hilden

Postscheckkonto: Essen 6643

HILDEN (Rhein), den 13. August 1946

Das Herbarium hat Fräulein Kuhn angelegt und die
Pflanzen gesammelt.

Maich





Knautia arvensis

Acker-Scabiose

Dipsaceae



Sinapis arvensis

Ackerseñf

Cruciferae



Convolvulus arvensis

Acker-Winde

Convolvulaceae



Acer plantanoides

Spitz-Ahorn

Aceraceae



Arum maculatum

Aronstab

Araceae



Valeriana sambucifolia

Holunderblütiger Baldrian

Valerianaceae



Heracleum sphondylium

Bärenklau

Umbelliferae



Jasione montana

Berg-Jasione

Campanulaceae



Epilobium montanum

Berg-Weidenröschen

Onagraceae



Sarothamnus scoparius

Besenginster

Papilionaceae



Betonica officinalis
(*Stachys betonica*)

Betonie

Labiatae



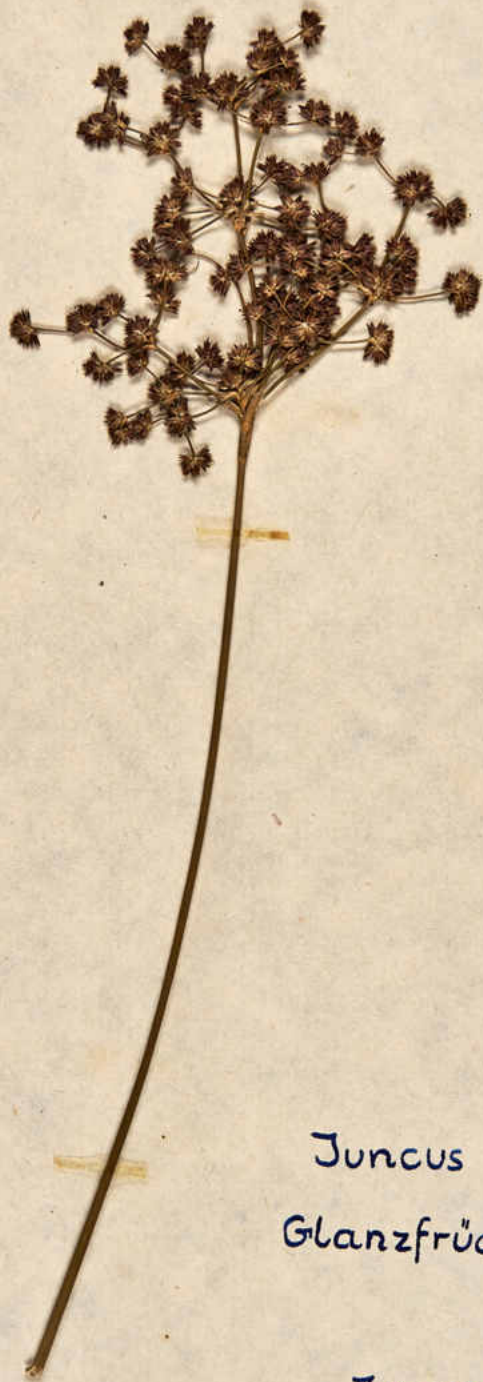
Hyoscyamus niger
Bilsenkraut

Solanaceae



Mercurialis perennis
Ausdauerndes Bingelkraut

Euphorbiaceae



Juncus lamprocarpus
Glanzfrüchtige Binse

Juncaceae



Betula verrucosa

Weiß-Birke

Betulaceae



Borago officinalis

Boretsch

Boragineae



Urtica dioeca

Große Brennessel

Urticaceae



Pirus communis

Birnbaum

Rosaceae



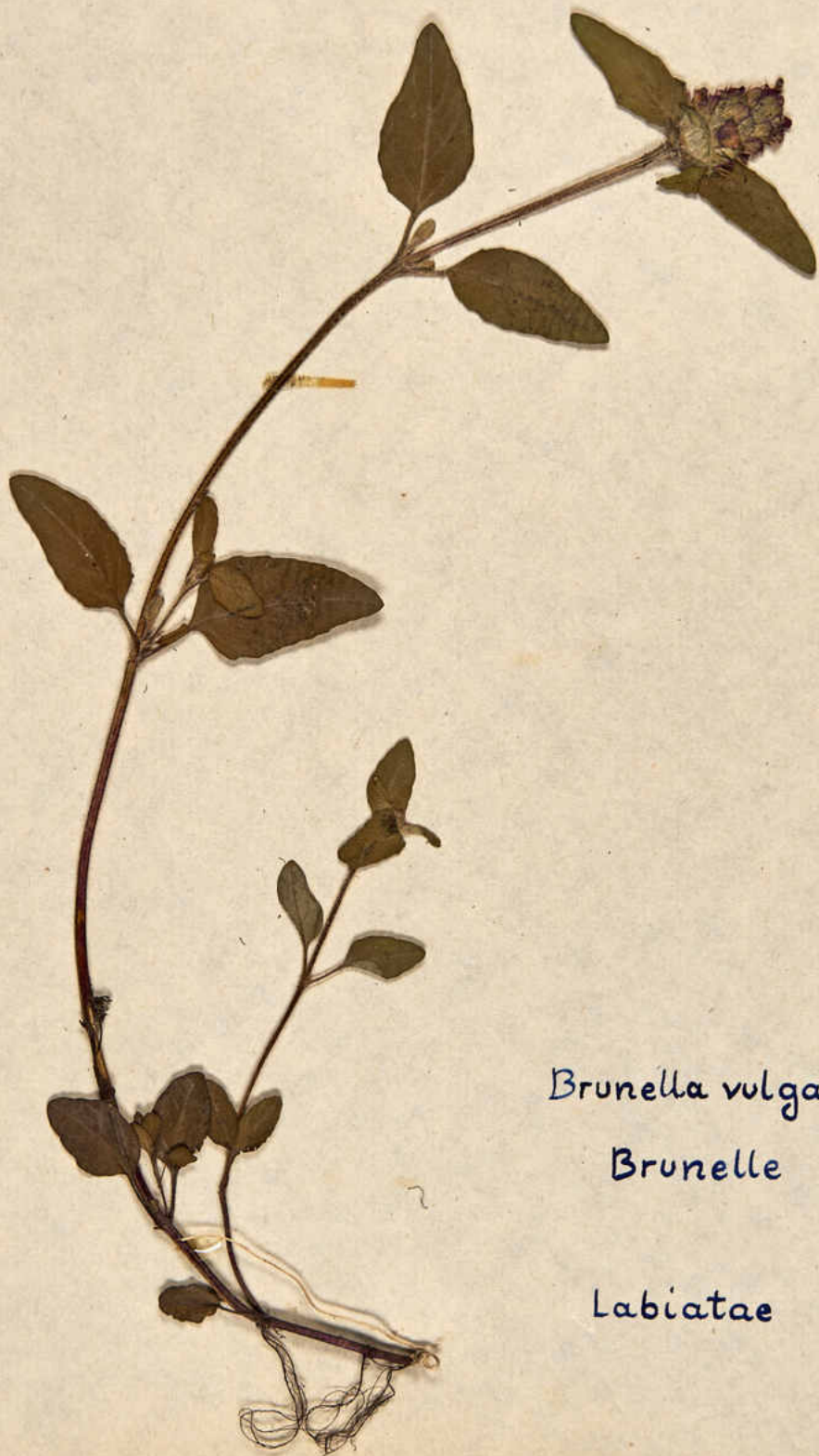
Rubus fruticosus
Brombeere

Rosaceae



Brunella grandiflora
großblütige Brunelle

Labiatae



Brunella vulgaris

Brunelle

Labiatae



Buxus sempervirens

Buchsbaum

Buxaceae



Anemone nemorosa

Buschwindröschen

Ranunculaceae



Anethum graveolens

Gemeiner Dill

Umbelliferae

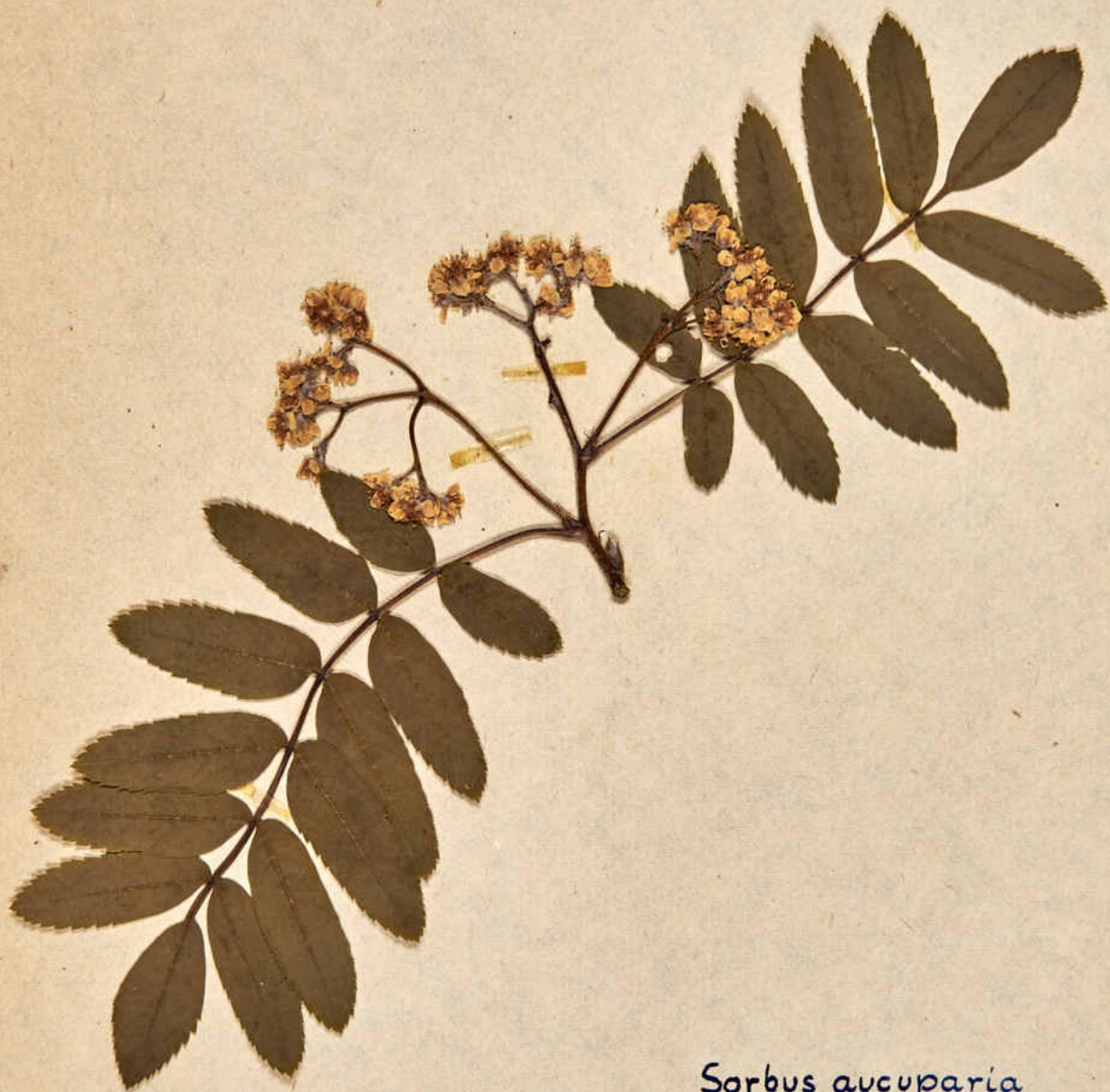


Onoropardon acanthemum

Krebsdistel

Compositae





Sorbus aucuparia

Eberesche

Rosaceae



Veronica officinalis

Echter Ehrenpreis

Scrophulariaceae



Taxus baccata
Eibe

Taxaceae



Quercus robur

Sommereiche

Fagaceae



Levistic offic.
Archangelica officinalis
Engelwurz

Umbelliferae



Gentiana pneumonanthe

Lungen-Enzian

Gentianaceae



Pisum sativum

Saat-Erbse

Papilionaceae



Fumaria officinalis

Erdrauch

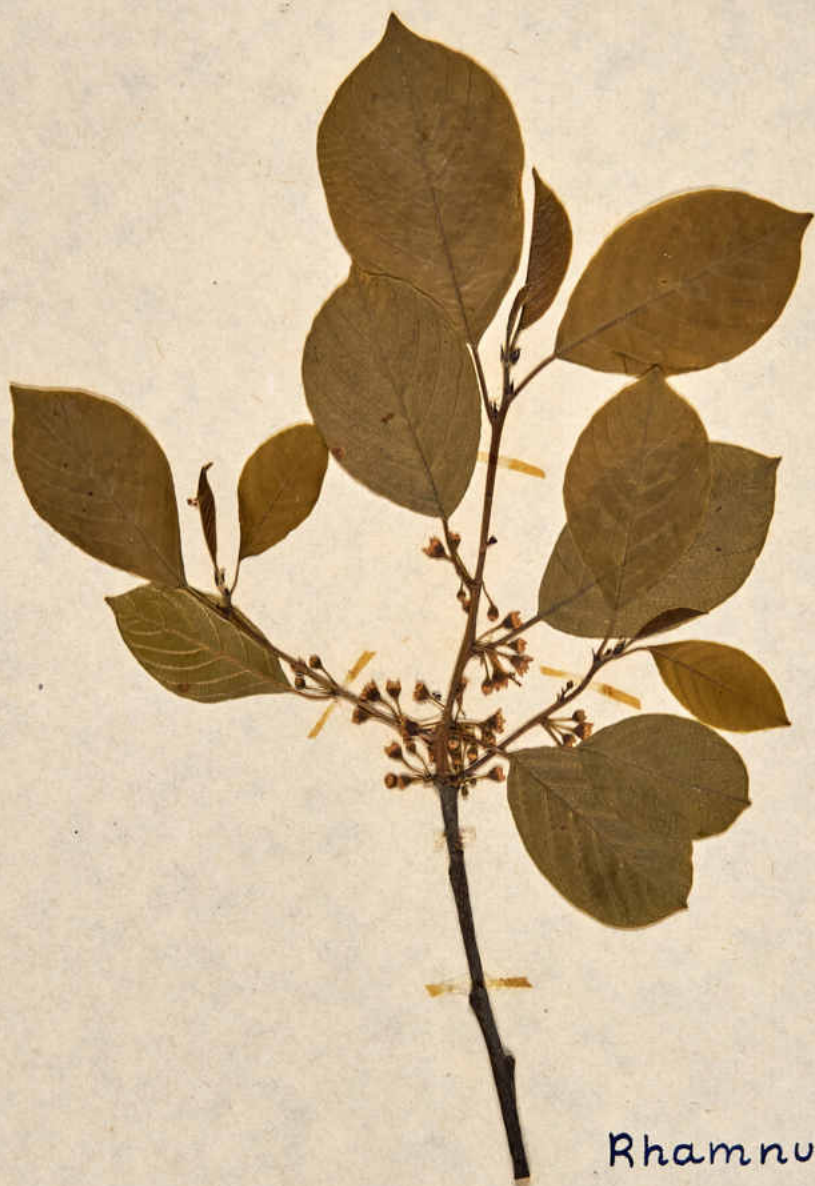
Papaveraceae



Artemisia dranunculus

Estragon

Compositae



Rhamnus frangula
Faulbaum

Rhamnaceae



Digitalis purpurea

Fingerhut

Scrophulariaceae



Centaurea jacea
Wiesen-Flockenblume

Compositae



Linaria vulgaris
Frauenflachs

Scrophulariaceae



Alchemilla vulgaris
Frauenmantel

Rosaceae



Alisma plantago

Froschlöffel

Alismaceae



Bellis perennis
Gänseblümchen
Compositae



Anagallis arvensis

Gauchheil

Primulaceae



Lonicera periclymenum

Geißblatt

Caprifoliaceae



Aegopodium podagraria

Giersch

Umbelliferae



Campanula rotundifolia

Rundblättrige
Glockenblume

Campanulacea



Erica tetralix

Glockenheide

Ericaceae



Cytisus Laburnum

Goldregen

Papilionaceae



Glechoma hederacea

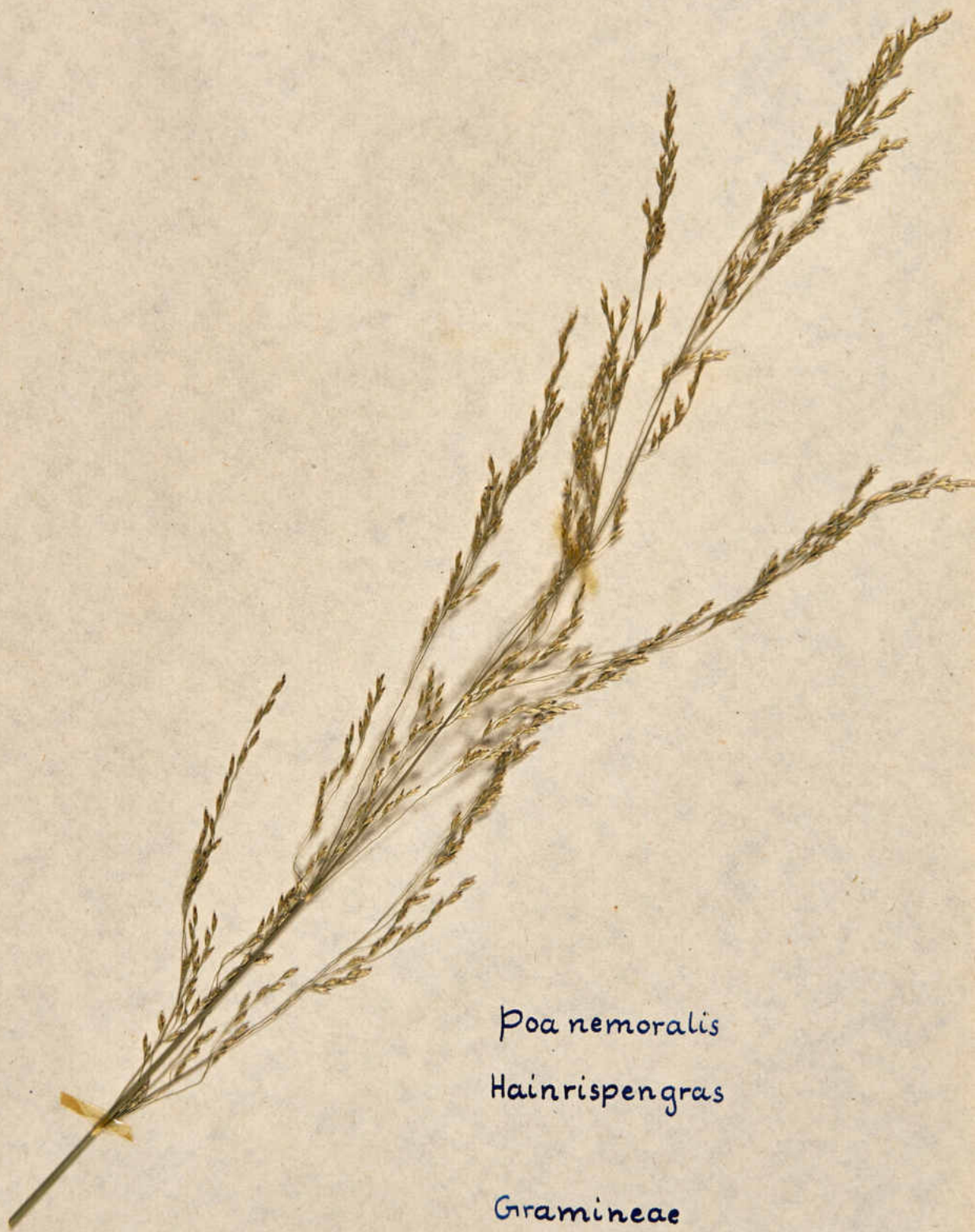
Gundermann

Labiatae



Ranunculus acer
Scharfer Hahnenfuß

Ranunculaceae



Poa nemoralis
Hainrispengras

Gramineae



Luzula campestris
Gemeine Hainsimse

Juncaceae



Luzula pilosa
Haarige Hainsimse

Juncaceae



Corylus avellana

Haselnuß

Betulaceae



Ononis spinosa
Dornige Hauhechel

Papilionaceae



Calluna vulgaris
Gemeines Heidekraut

Ericaceae



Vaccinium myrtillus

Heidelbeere

Ericaceae



Capsella bursa pastoris

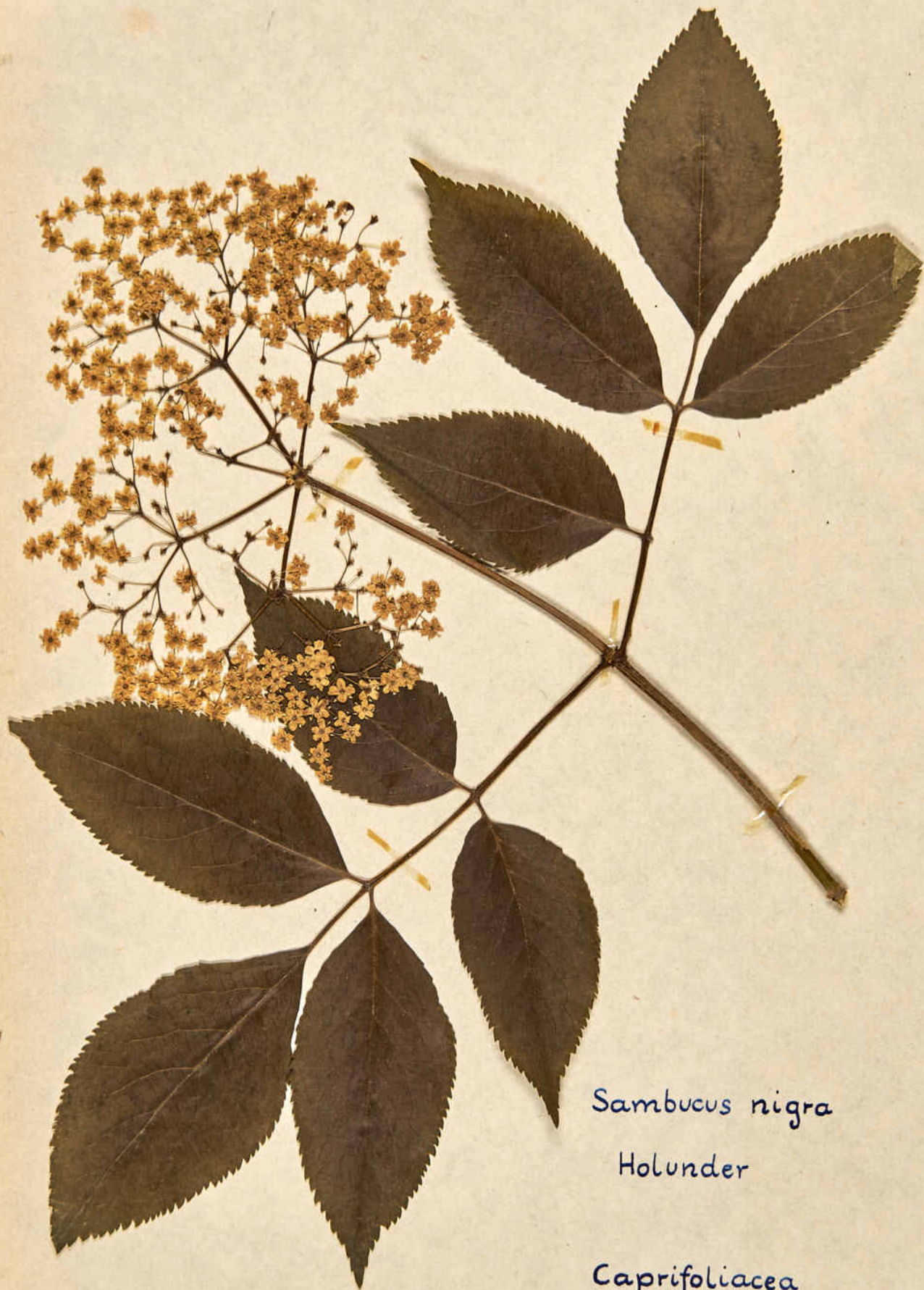
Hirtentäschel

Cruciferae



Galeopsis tetrahit
Gemeiner Hohlzahn

Labiatae



Sambucus nigra

Holunder

Caprifoliacea



Humulus lupulus

Hopfen

Moraceae



Tussilago farfara
Huflattich

Compositae



Vinca minor

Immergrün

Apocynaceae



Philadelphus coronarius

Wilder Jasmin

Caprifoliaceae



Ribes rubrum
Rote Johannisbeere

Saxifragaceae



Hypericum perforatum
Johanniskraut

Gruttiferae



Matricaria chamomilla
Echte Kamille

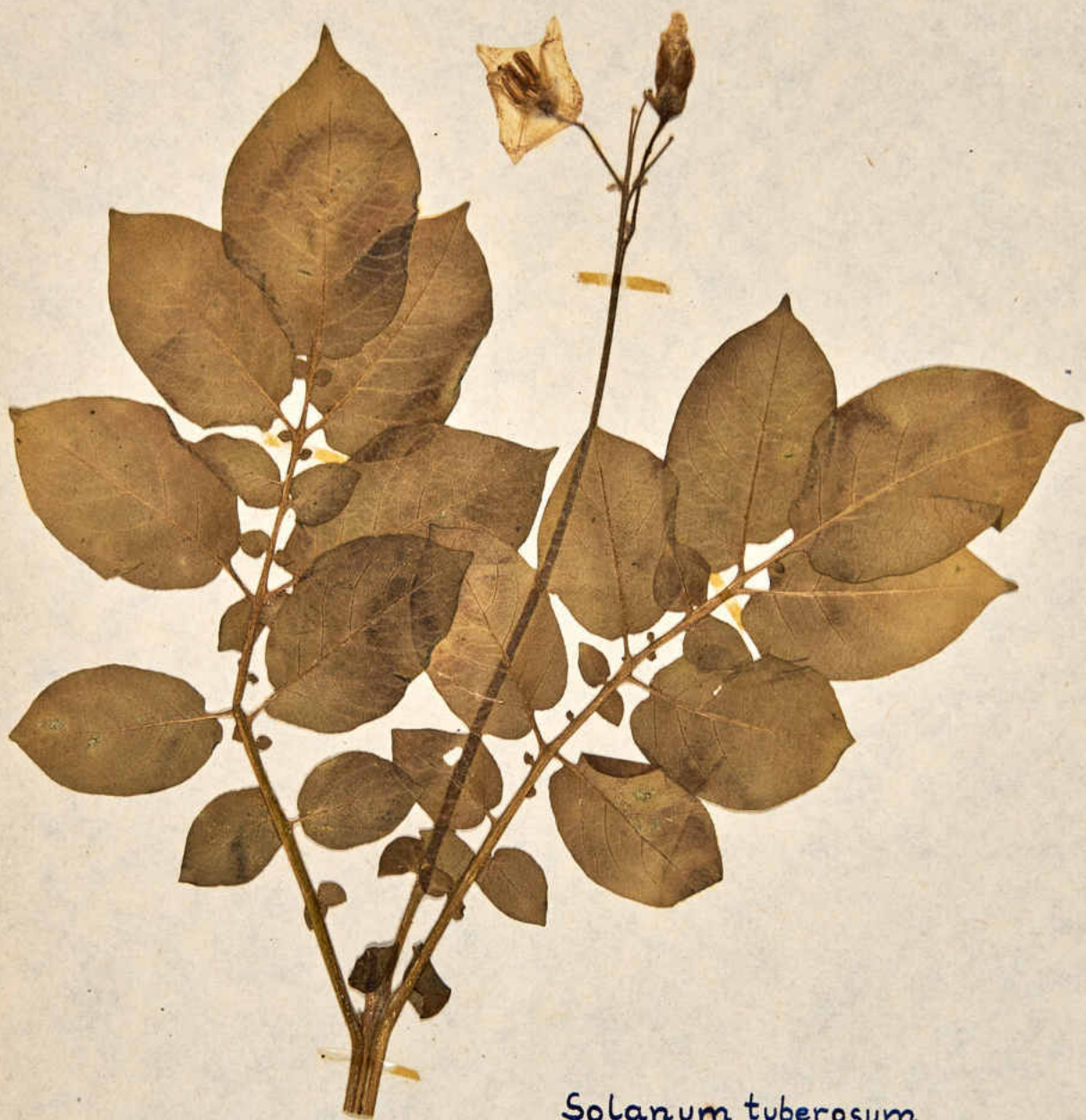
Compositae



Koeleria cristata

Kammgras

Gramineae



Solanum tuberosum

Kartoffel

Solanaceae



Anthriscus silvestris

Wald-Kerbel

Umbelliferae



Pinus silvestris

Kiefer

Pinaceae



Physalis alkekengi

Judenkirsche

Solanaceae



Prunus cerasus
Kirsche

Rosaceae



Papaver rhoeas

Klatschmohn

Papaveraceae



Anthyllis vulneraria

Wundklee

Papilionaceae



Lotus corniculatus

Wiesen-Hornklee

Papilionaceae



Melilotus officinalis

Steinklee

Papilionaceae



Oxalium acetosella

Sauerklee

Oxalidaceae



Trifolium incarnatum

Inkarnat-Klee

Papilionaceae



Trifolium minus

Kleiner Klee

Papilionaceae



Trifolium pratense

Rotklee

Papilionaceae



Trifolium repens

Weißklee

Papilionaceae



Orchis maculata
Geflecktes Knabenkraut

Orchidaceae



Dactylis glomerata

Knäuelgras

Gramineae



Polygonum aviculare
Vogelknöterich

Polygonaceae



Centaurea cyanus
Kornblume

Compositae



Senecio vulgaris
Gemeines Kreuzkraut

Compositae



Anemone pratense
Küchenschelle

Ranunculaceae



Coronaria flos cuculi

Kuckucksblume

Caryophyllaceae



• *Eupatorium cannabinum*
Kunigundenkraut

Compositae



Galium mollugo
Gemeines Labkraut

Rubiaceae



Corydalis solida
Gefingertes Lerchensporn

Papaveraceae



Liguster
Ligustrum vulgare
Oleaceae



Tilia cordata

Winterlinde

Tiliaceae



Taraxacum officinale
Gemeiner Löwenzahn

Compositae



Pulmonaria officinalis

Lungenkraut

Boraginaceae



Medicago sativa

Lucerne

Papilionaceae



Ulmaria pentapetala

Echtes Mädesüß

Rosaceae



Convallaria majalis

Maiblume

Liliaceae



Malva neglecta
Weg-Malve

Malvaceae



Mentha arvensis

Acker-Minze

Labiatae



Mentha crispata

Krause Minze

Labiatae



Nepeta moussini

Katzenminze

Labiatae



Mespilus germanica

Mispel

Rosaceae



Daucus carota
Möhre

Umbelliferae



Sclerotium von
Claviceps purpurea
auf *Secale cereale*

Mutterkorn

Ascomycetae



Oenothera biennis
Virginische Nachtkerze

Onagraceae



Solanum dulcamara
Bittersüßer Nachtschatten

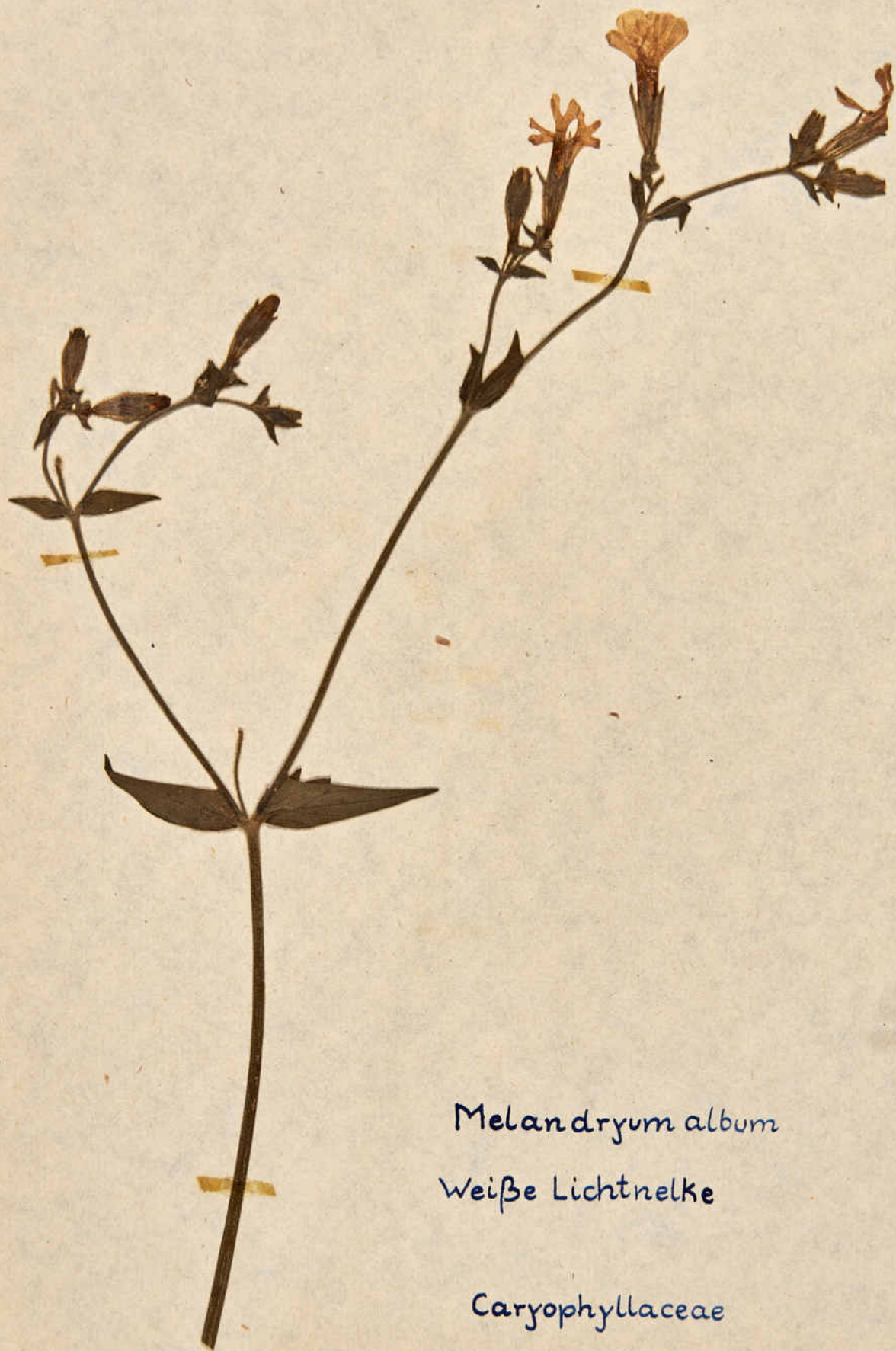
Solanaceae



Echium vulgare

Natterkopf

Borraginaceae



Melandryum album

Weißer Lichtnelke

Caryophyllaceae



Geum urbanum
Echte Nelkenwurz

Rosaceae



Agrimonia eupatoria
Odermennig

Rosaceae



Aristolochia clematitis

Osterluzei

Aristolochiaceae



Pestasites officinalis

Gemeine Pestwurz

Compositae



Petroselinum sativum

Petersilie

Umbelliferae



Prunus persica

Pfirsich

Rosaceae



Tanacetum vulgare

Rainfarn

Compositae



Solidago canadensis
Kanadische Raute

Compositae



Erodium cicutarium

Schierlingsblättriger Reiherschnabel

Geraniaceae



Secale cereale

Roggen

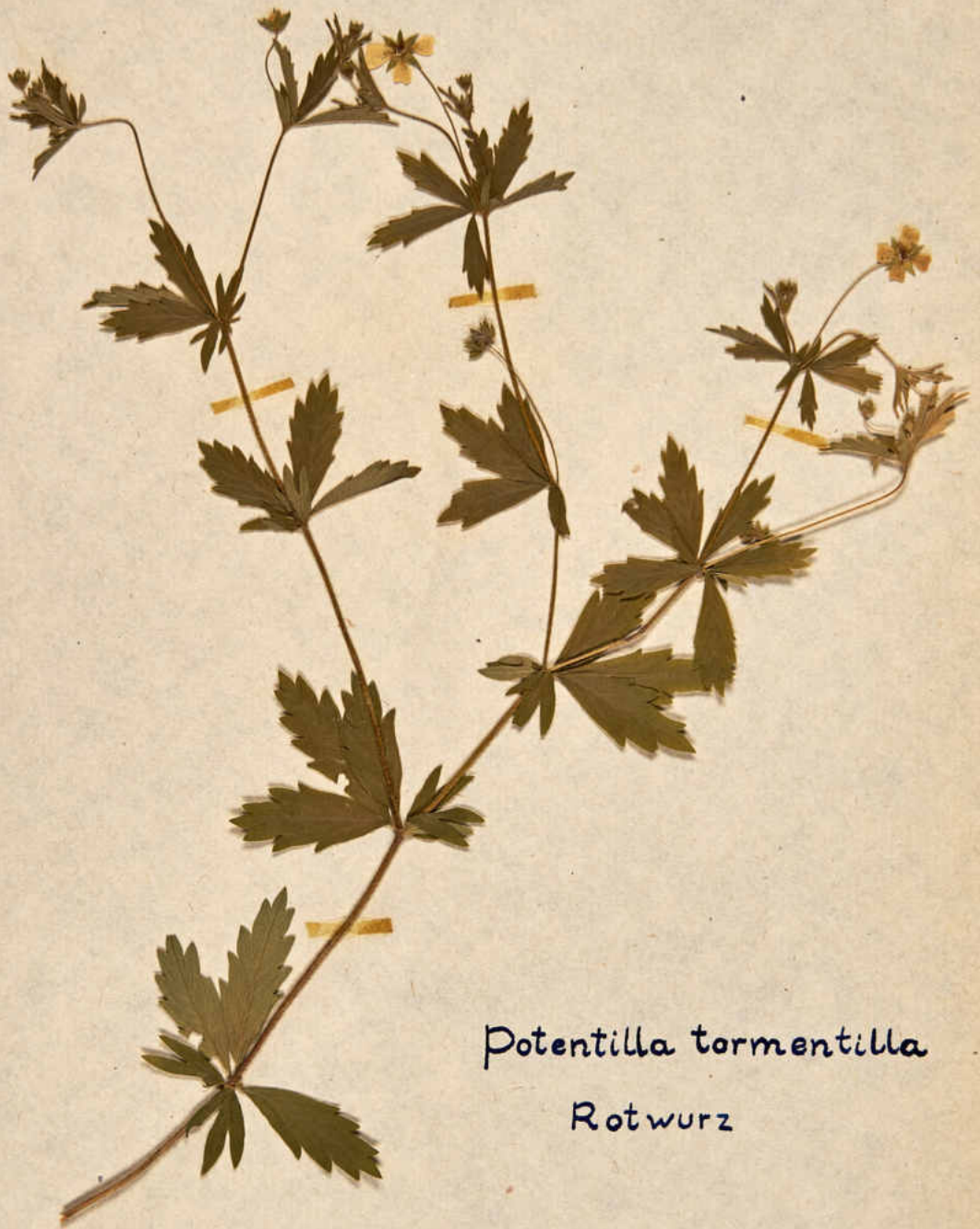
Gramineae



Crataegus monogyna

Rotdorn

Rosaceae



Potentilla tormentilla

Rotwurz


Rosaceae



Crocus sativus

Safran

Iridaceae

A dried botanical specimen of Salvia pratensis is mounted on a light-colored paper. The specimen consists of a single stem that curves from the bottom right towards the top left. At the top of the stem is a dense, elongated spike of small flowers, which are a mix of blue and brownish-purple. The stem is covered in small, pointed, serrated bracts. Two large, ovate leaves with serrated margins are attached to the lower part of the stem. The leaves are dark green and show a prominent network of veins. The entire specimen is held in place by several small yellow paper tabs.

Salvia pratensis

Wiesen-Salbei

Labiatae



Rumex acetosa

Sauerampfer

Polygonaceae



Equisetum arvense
Acker-Schachtelhalm

Equisetineae



Equisetum palustre
Sumpf-Schachtelhalm

Equisetineae



Achillea millefolium

Schnabelwurz

Compositae



Ranunculus ficaria
Scharbockskraut

Ranunculaceae



Maianthemum bifolium
Zweiblättrige Schattenblume

Liliaceae



Polygonum bistorta

Schlangenwurz

Polygonaceae



Prunus spinosa

Schlehdorn

Rosaceae



Primula officinalis

Schlüsselblume

Primulaceae



Viburnum opulus

Schnee ball

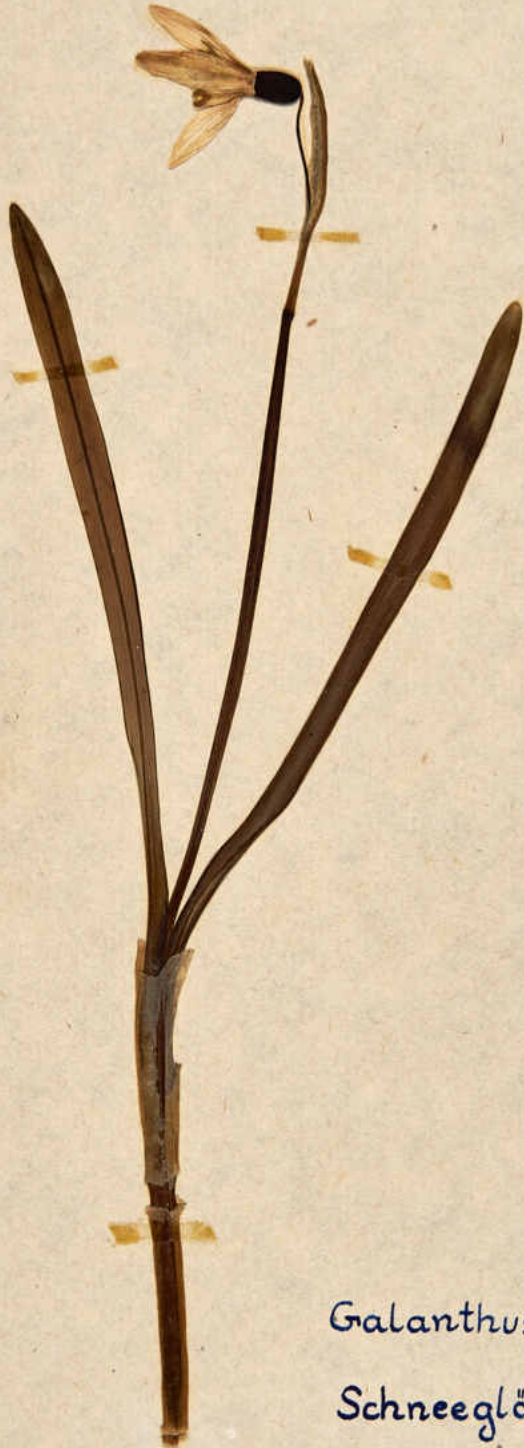
Caprifoliaceae



Symphoricarpos racemosus

Schneebeere

Caprifoliaceae



Galanthus nivalis

Schneeglöckchen

Amaryllidaceae



Chelidonium majus
Schöllkraut

Papaveraceae



Symphytum officinale

Schwarzwurz

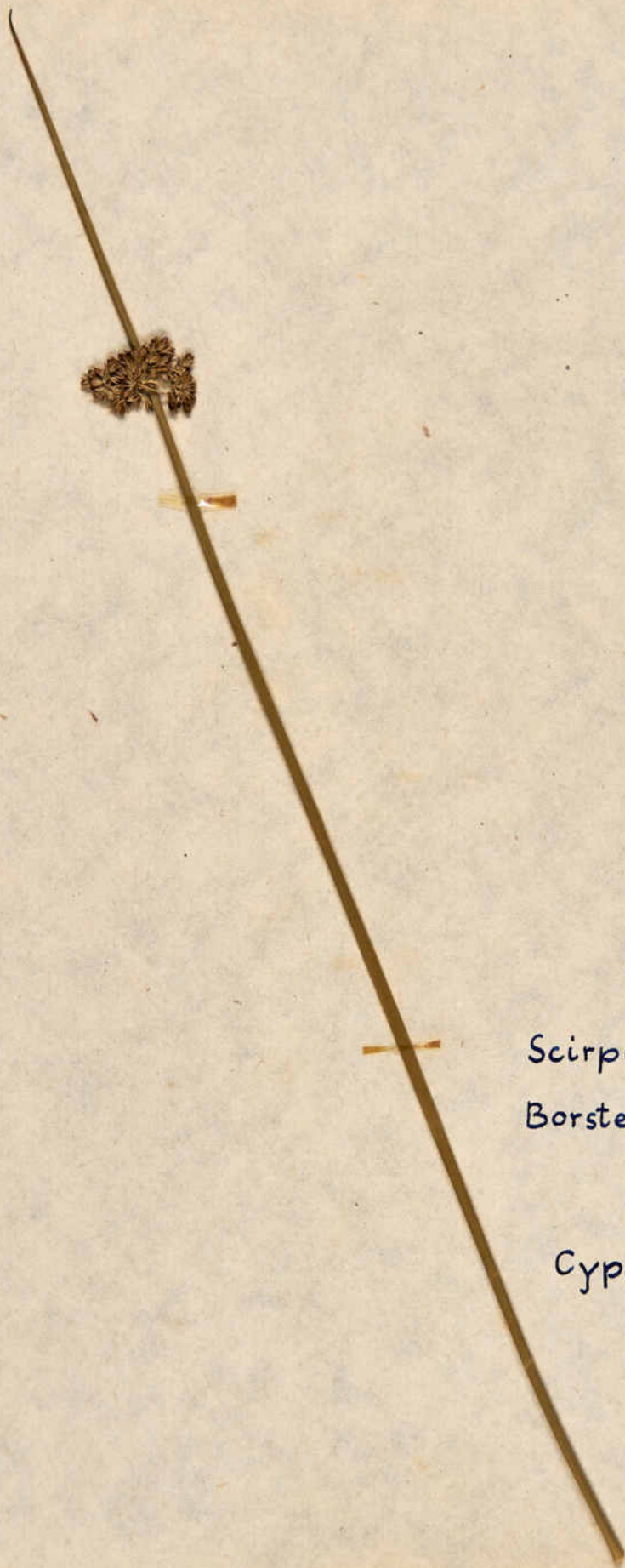
Bořaginaceae



Saponaria officinalis

Seifenkraut

Caryophyllaceae



Scirpus setaceus

Borstenförmige Simse

Cyperaceae



Drosera rotundifolia

Rundblättriger
Sonnentau

Droseraceae



Drosera intermedia
Mittlerer Sonnentau

Droseraceae



*Asparagus
officinalis*
Gemeiner Spargel

Liliaceae



Spirea ulmaria

Spierstrauch

Rosaceae



Impatiens noli tangere
Gemeines Springkraut

Balsaminaceae



Ribes grossularia

Stachelbeere

Saxifragaceae



Ilex aquifolium

Stechpalme

Aquifoliaceae



Stellaria holostea
Grossblumige Sternmiere

Caryophyllaceae



Viola tricolor
Stiefmütterchen

Violaceae



Geranium pratense
Wiesen-Storchschnabel

Geraniaceae



Caltha palustris
Sumpfdotterblume

Ranunculaceae



Achillea pharmitica

Sumpfgarbe

Compositae



Lamium album

Weißer Taubnessel

Labiatae




Thymus chamaedrys
Gamander-Thymian
Labiatae



Solanum lycopersicum

Tomate

Solanaceae



Tofieldia calyculata
Sumpf-Torflilie

Liliacea













Viola canina
Hunds-Weilchen

Violaceae



Viola odorata
Wohlriechendes Veilchen

Violaceae



Myosotis palustris
Sumpf-Vergißmeinnicht

Bořaginaceae



Fragaria vesca
Walderdbeere

Rosaceae



Teucrium scorodania

Wald-Gamander

Labiatae



Asperula odorata

Waldmeister

Rubiaceae



Melampyrum pratense

Wald-Wachtelweizen

Scrophulariaceae



Epilobium angustifolium
Wald-Weidenröschen

Onagraceae



Stachys silvatica

Wald-Ziest

Labiatae



Plantago lanceolata

Spitz-Wegerich

Plantaginaceae



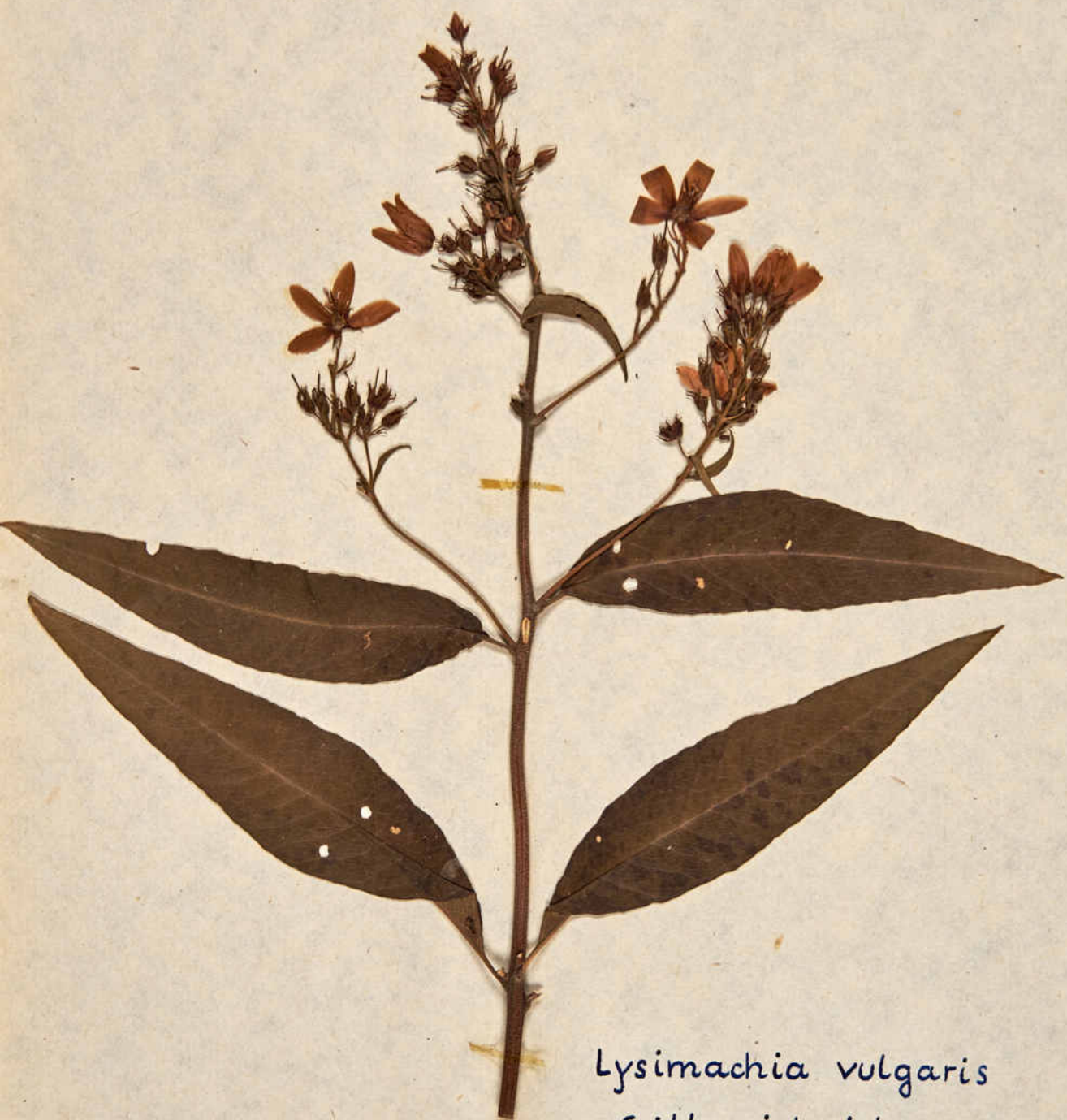
Plantago maior
Großer Wegerich

Plantaginaceae



Salix repens
Kriechende Weide

Salicaceae



Lysimachia vulgaris
Gilbweiderich

Primulaceae



Lythrum salicaria

Roter Weiderich

Lythraceae



Crataegus monogyna
Eingriffeliger Weißdorn

Rosaceae



*Polygonatum
multiflorum*

Vielblütige Weißwurz

Liliaceae



Vicia sativa

Saat-Wicke

Papilionaceae



Vicia sepium

Zaun-Wicke

Papilionaceae



Lathyrus pratensis
Wiesen-Platterbse

Papilionaceae



Cardamine pratensis

Wiesenschaumkraut

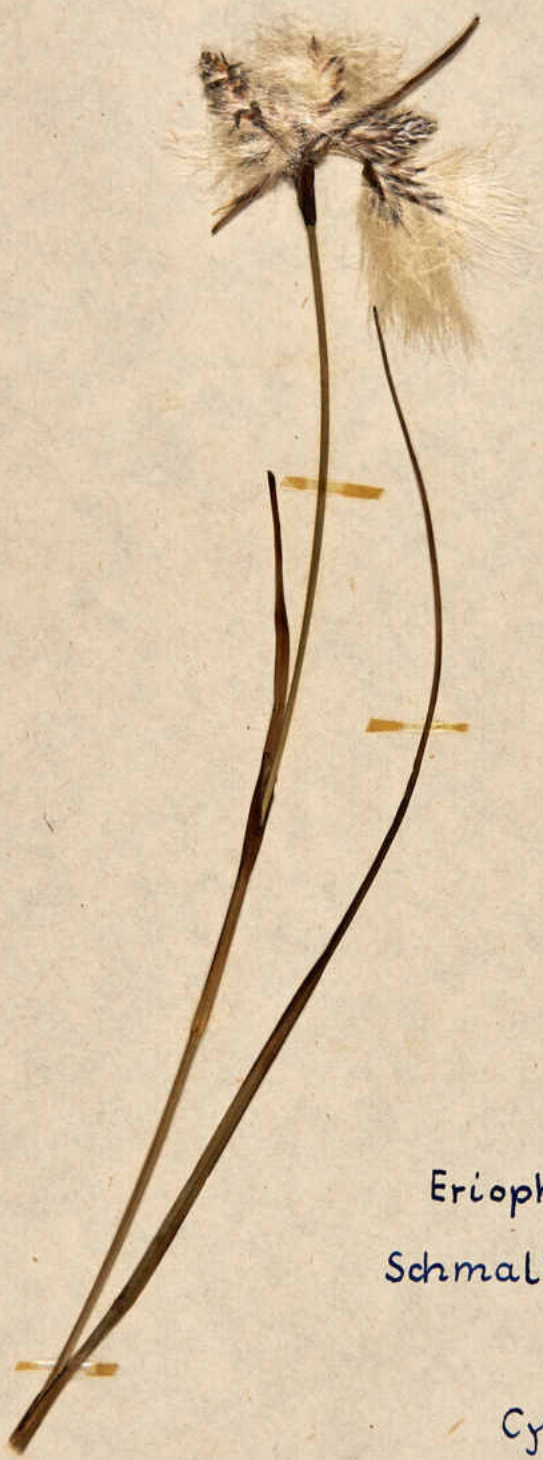
Cruciferae



Erothis hiemalis

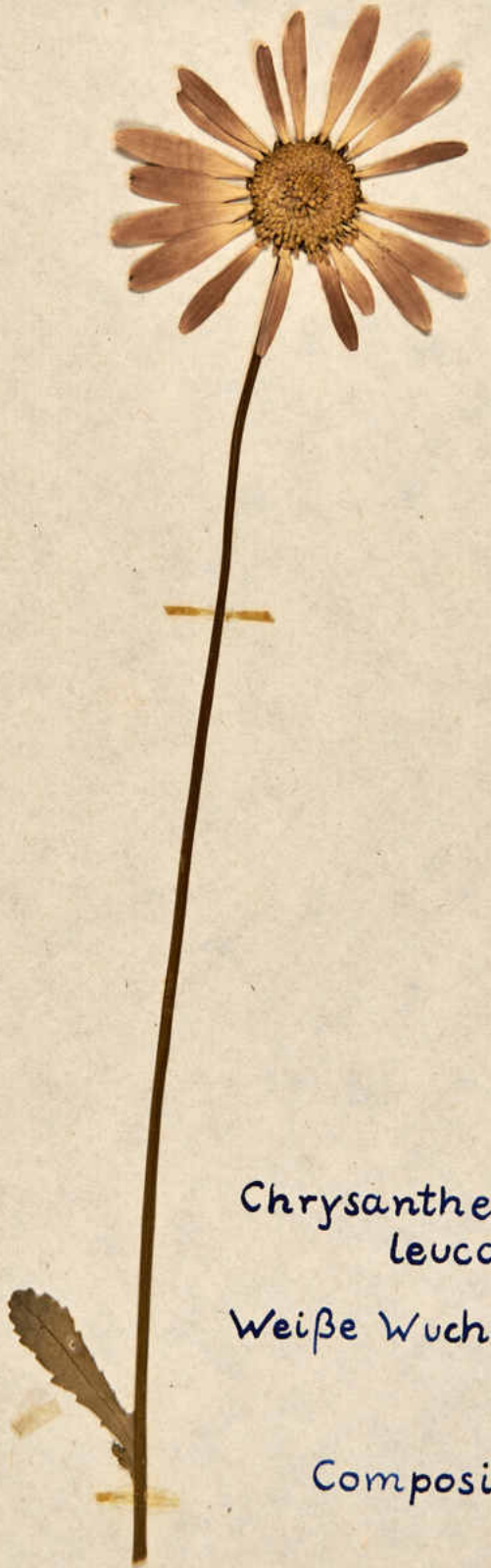
Winterling

Ranunculaceae



Eriophorum angustifolium
Schmalblättriges Wollgras

Cyperaceae



Chrysanthemum
leucanthemum

Weißer Wucherblume

Compositae



Bryonia alba
Weiße Zaunrübe
Cucurbitaceae



Listera bifolia
Großes Zweiblatt

Orchidaceae



Prunus domestica

Zwetsche

Rosaceae



Scilla sibirica

Sibirische Zwiebel

Liliaceae